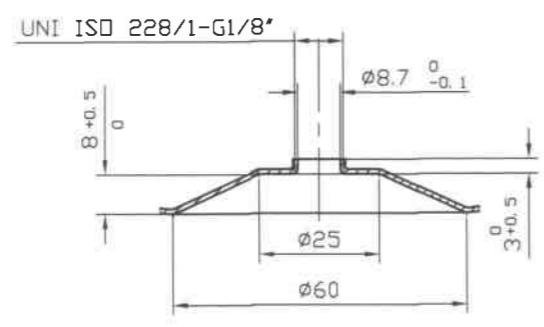
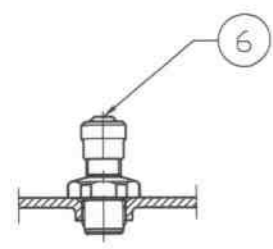
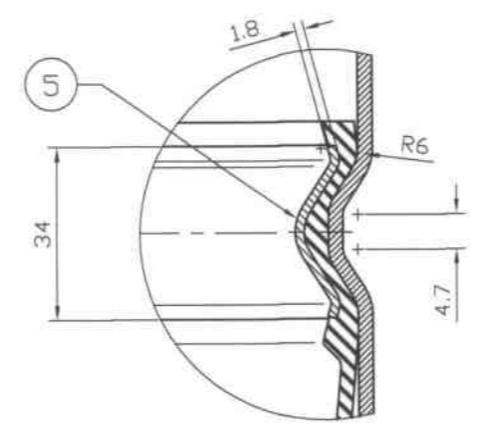


A	WPS/08/006	EN288-3
B	WPS/00/010	EN288-3
B	WPS/00/015	EN288-3
C	WPS/08/005	EN288-3



PART. W SCALA 1:1

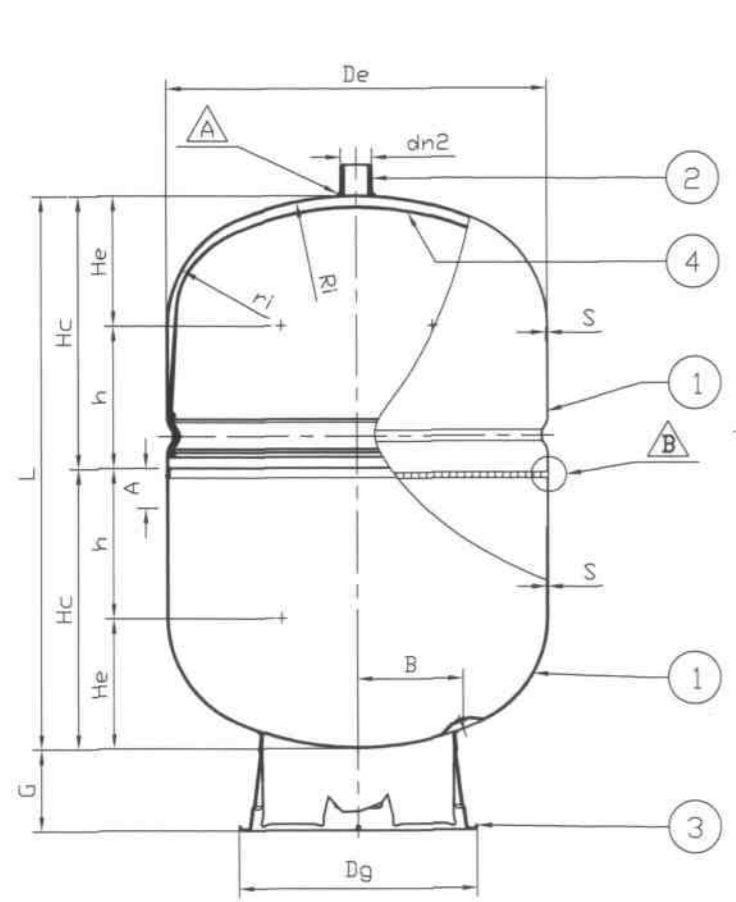


PART. X SCALA 1:1

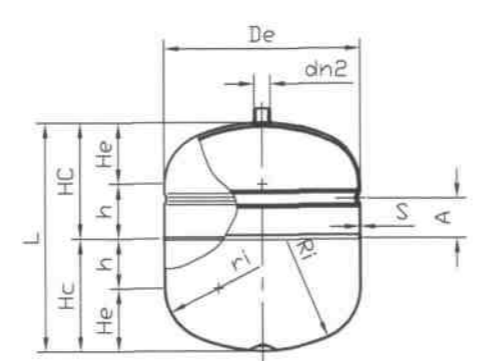
TIPO	LITRI	De	Ri	ri	He	h	Hc	L	S	dn	A	B	G	Dg
ERCE/DS 35	35	400	340	110	129	48	177	348	1.2	3/4" NPT	40	-	-	-
ERCE/DSV 50	50	400	340	110	129	106	232	464	1.2	1" NPT	40	-	110	329
ERCE/DSV 80	80	400	340	110	129	226	355	700	1.5	1" NPT	40	120	110	329
ERCE/DSV 100	100	500	400	150	172	158	325	650	1.5	1" NPT	80	120	114	329
ERCE/DSV 150	150	500	400	150	172	272	439	878	1.8	1" NPT	95	120	114	329
ERCE/DSV 200	200	600	410	175	212	225	432	864	1.8	1" NPT	95	150	148	485
ERCE/DSV 250	250	650	400	208	248	222	470	940	2.0	1" NPT	100	150	148	485
ERCE/DSV 300	300	650	400	208	248	302	525	1050	2.0	1" NPT	100	150	148	485
ERCE/DSV 500	500	775	470	150	255	370	620	1240	2.5	1 1/4" NPT	100	200	155	485

**BUREAU VERITAS ITALIA S.p.A.**  
IT FILE 08.IT.0522145.588

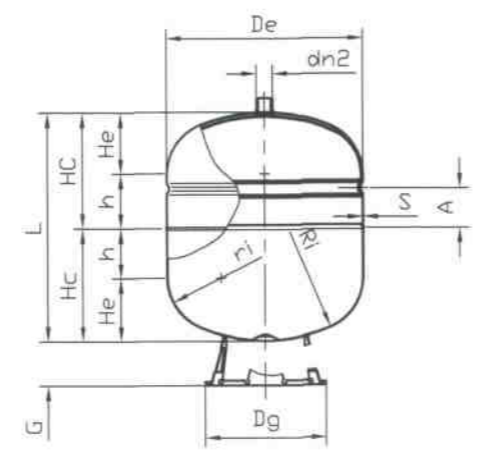
Examined within the General Conditions of BUREAU VERITAS in order to check the compliance with the applicable requirements of DIRECTIVE 92/31/EEC. All particulars not shown on this document are assumed to be as per the requirements of the aforesaid texts, mainly constructional details. The examination of this document gives rise to remarks in red.



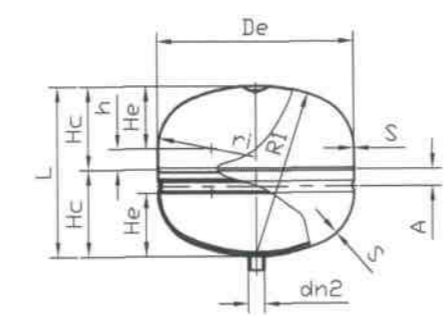
ERCE-DSV 80/500



ERCE 50



DSV 50



ERCE-DS 35

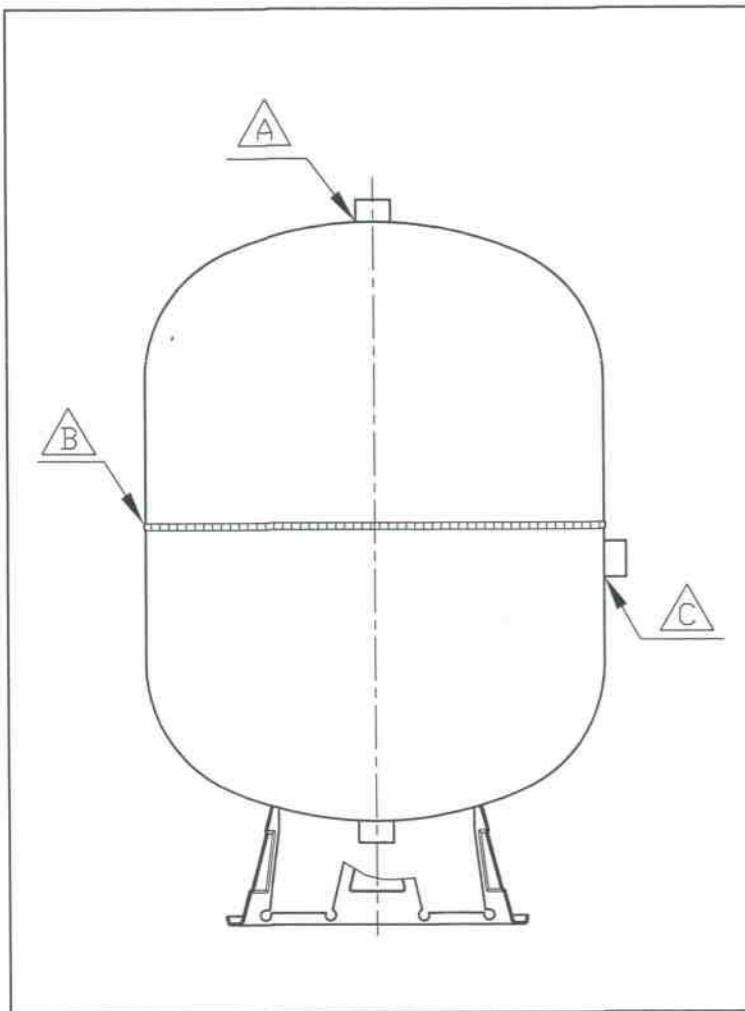
POSIZIONE	N° PEZZI	DESCRIZIONE	MATERIALE	CERT.	NOTE
6	1	VALVOLA DI PREC.	CW614N UNI EN 12164	-	
5	1	ANELLO DI TENUTA	DD11 UNI EN 10111	3.1	
4	1	MEMBRANA	GOMMA SBR DIN 4807-3	-	
3	1	BASAMENTO	DD11 UNI EN 10111	3.1	
2	1	MANICOTTI E TRONCHETTI	S235 UNI EN 10025	3.1	
			E235 UNI EN 10217-1	3.1	
1	2	CALOTTA STAMPATA	DD11 UNI EN 10111	3.1	
			DD13 UNI EN 10111	3.1	
			DC04 EN 10130	3.1	

DATI DI PROGETTO		
FLUIDO	NATURA	ARIA+ACQUA
	STATO FISICO	GAS-LIQUIDO
	PESO SPECIFICO	Kg/m3 1000
CORROSIONE	SPESSORE	mm NON RICHIESTO
CAPACITA'		litri VEDI TABELLA
PRESSIONE MASSIMA DI ESERCIZIO (Pe)	bar	10
PRESSIONE DI PROVA IDRAULICA (Pi)	bar	14,3
TEMPERATURA MASSIMA DI ESERCIZIO	° C	-10/+99

REVISIONI			
N°	DATA	RED.	VER.
DISEGN. 28/04/00			FIRMA G.B.
CONTR. 28/04/00			FIRMA L.P.
SCALA : /		CAUSALE	
DISEGNO/COCCIA		MATERIALE :	
SPECIFICAZIONE INTERNE		TOLLERANZE GENERALI SECONDO UNI EN 22768-m	
Il presente disegno è di esclusiva proprietà della ELBI S.p.a. e non può essere riprodotto né reso noto a terzi senza autorizzazione. Ogni trasgressione verrà punita a norma di legge.		TABELLA	

26/2/10  
Via Bassano 9  
35010 TREVISO (Padova)  
Partita IVA 00838770287

BUREAU VERITAS  
D. M. ANTONIN  
21/03/2010



SALDATURE

POS.	PROCEDIMENTO	TIPO	PQR	CAMPO DI APPLICAZIONE PQR	WPQ	CAMPO DI APPLICAZIONE WPQ	POSTAZIONE	
A	135	FULLY MECHANIZED	0278-BCI-EN 288-3	-BOCCELLI: SP. 3+7,2mm -Ø 13,25+53 mm -LAMIERA: 1,0+7,2 mm	PAD-10-A-023		S57	
B	135	FULLY MECHANIZED	PAD-10-B-016	1,75+3,25 mm D>325mm	PAD-10-A-027 PAD-10-A-032		S19	
			PAD-10-B-017	0,84+1,56 mm D>200mm	PAD-10-A-028		S56	
C	135	PARTLY MECHANIZED	0354-BCI-EN 288-3	-BOCCELLI: SP.2,87+5,74mm -Ø13,35+53,4 mm -LAMIERA: 3,0+6,0 mm	PAD-09-A-0007	-SPESSORI 2,0+3,0 mm -Ø 13,5+27,0 mm	N.A.	
			0355-BCI-EN 288-3	-BOCCELLI: SP.3,0+16,0mm -Ø44,45+177,8 mm -LAMIERA: 3,0+16,0 mm	PAD-09-A-0006	-SPESSORI ≥ 3,0 mm -Ø ≥ 25 mm	N.A.	
			0354-BCI-EN 288-3	-BOCCELLI: SP.2,87+5,74mm -Ø13,35+53,4 mm -LAMIERA: 3,0+6,0 mm	PAD-10-A-025	-SPESSORI 2,2+3,0 mm -Ø 13,5+27,0 mm	N.A.	
			0355-BCI-EN 288-3	-BOCCELLI: SP.3,0+16,0mm -Ø44,45+177,8 mm -LAMIERA: 3,0+16,0 mm	PAD-10-A-026	-SPESSORI ≥ 3,0 mm -Ø ≥ 25 mm	N.A.	
		MANUAL	111	0356-BCI-EN 288-3	-BOCCELLI: SP.2,87+5,74mm -Ø13,35+53,4 mm -LAMIERA: 3,0+6,0 mm	PAD-10-A-021	-SPESSORI 2,2+3,0 mm -Ø 13,5+27,0 mm	N.A.
			111	0357-BCI-EN 288-3	-BOCCELLI: SP.3,0+16,0mm -Ø44,45+177,8 mm -LAMIERA: 3,0+16,0 mm	PAD-10-A-022	-SPESSORI ≥ 3,0 mm -Ø ≥ 25 mm	N.A.

**elbi** S.p.A.  
Via Buccia n° 9  
35010 LIMENA (Padova)  
Partita IVA 00638770287

25/2/10



DISEGN.	DATA 15/09/09	FIRMA D.Z.	DENOMINAZIONE : TABELLARE SERBATOI A DUE CALOTTE PUPAZZO SALDATURE	TRATTAMENTO -ZINCATURA -VERNICIATURA -VETRIFICAZIONE -GREZZO
CONTR.	DATA 15/09/09	FIRMA D.Z.		
SCALA : -			SPECIFICHE INTERNE -	TOLLERANZE GENERALI SECONDO UNI ISO 22768-m
			Il presente disegno e' di esclusiva proprieta' della ELBI S.p.a. e non puo' essere riprodotto ne' reso noto a terzi senza autorizzazione. Ogni trasgressione verra' punita a norma di legge .	DISEGNO/CODICE SALD_2C_PED